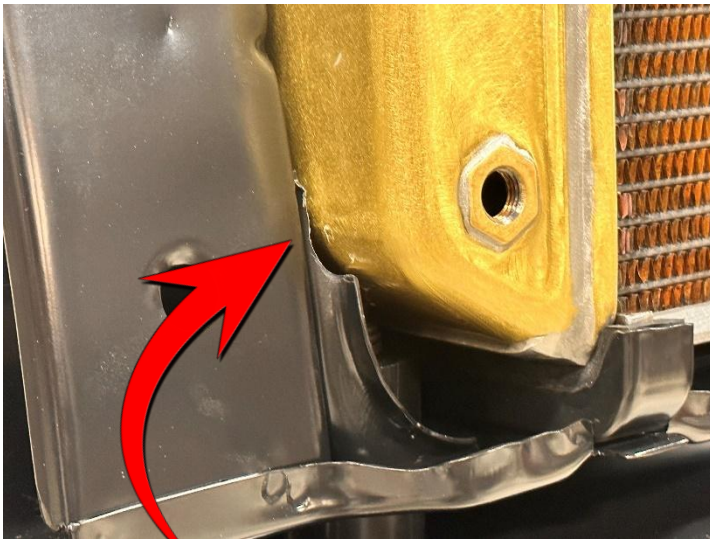


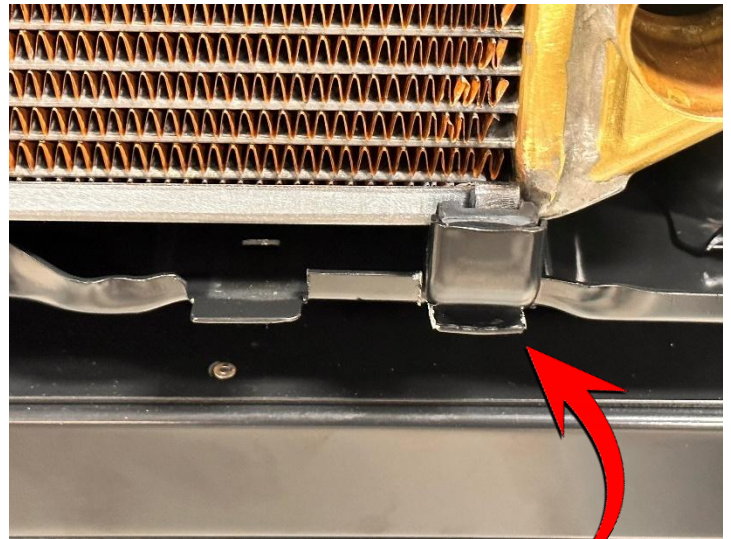
SLIGHT MODIFICATION IS REQUIRED TO LOWER RETAINER MOUNTS ON  
CORE SUPPORT FOR USE WITH A 4 ROW RADIATOR.

*\*Original big block C10 truck core supports require NO modifications\**



\*LEFT SIDE\*

requires notch on lower bracket



\*RIGHT SIDE\*

requires 2 cuts to the core support & the  
saddle mount moved over as seen above

**4 CORE BIG BLOCK RUBBER & BIG BLOCK STEEL SADDLE MOUNTS ARE REQUIRED.**

Available through: LMC Truck, Auto Metal Direct, or Brothers Trucks.

- Cooling Components Fan- *Part# BL28/ExtraMaterial*